

9. Courses

9.1 Appendix B supplied with these sailing instructions gives the courses to be sailed.

9.2 Before the Warning Signal, the course to be sailed will be displayed on a white board on the stern of the signal boat.

9.3 Spinnaker, Non-Spinnaker, and Racer/Cruisers' courses will be displayed in Black writing with SPIN at the top. Cruising Course will be displayed in RED writing with CRU at the top.

10. Marks

10.1 Marks will be fixed government marks, except for the starting mark, which will be a yellow tetrahedron.

10.2 Finish mark will be Bayboro Harbor Entrance Mark. Fl (2+1) G 6s 16ft 4m "S".

10.3 Mark locations are as shown in Appendix C.

11. The Start

11.1 The warning signal for each succeeding class shall be made with or after the starting signal of the preceding class.

11.2 The order of starts will be as designated in the Sailing Instruction 7.

11.3 The starting line will be between a staff from which an orange flag will be displayed on the race committee boat and the starting mark. The starting line will be within a one (1) mile radius of Mark D. Should the wind conditions necessitate a postponement prior to the start, the R/C may move the starting area farther up the course by displaying code flag "L" and motoring towards the next mark. In this case, the starting mark will be either a mark of the course, a nearby government aid, or an inflatable buoy. Should the R/C pass a mark of the course, that mark is then eliminated from the course.

11.4 Before the start of the race, each vessel shall check-in with the race committee boat via VHF Channel 63, or by passing across the stern of the race committee boat on a starboard tack and hailing the vessel name, sail number, and class. Only the race committee may protest a competitor under this section. This changes RRS 60.1.

11.5 Boats whose warning signal has not been made shall stay away from the starting area.

11.6 A boat starting later than 5 minutes, 10 minutes for Cruising, after her starting signal will be scored a Did Not Start (DNS) without a hearing. This changes RRS 63.1, A4.1, and A5.

12 Recalls

12.1 The race committee may, after the starting signal, hail the sail numbers of boats that have not complied with RRS 29.1. The delay of such a hail, the order of hail or failure of a competitor to hear such a hail shall not be grounds for granting redress. This changes RRS 62.1(a).

12.2 If the race committee signals a general recall, the division that has been recalled shall start AFTER all other divisions have started. If more than one division has a general recall, then each recalled division shall restart in their respective starting position AFTER all other divisions have started. This changes RRS 29.2.

13. The Finish

13.1 The finish line will be between a staff from which an orange flag is displayed on the race committee boat and the finish mark.

14. Penalty Systems

14.1 The Scoring Penalty RRS 44.3 will apply when a boat may have broken a rule of RRS Part 2. A boat may not take a Two-Turns Penalty; this changes rule 44.1 The One-Turn Penalty will apply when a boat may have broken RRS 31.

14.2 An Alternative Acknowledgement form will be available at the Protest Desk for those who have taken a Penalty.

15. Time Limit

15.1 All boats not finished by 1700 will be scored a "Did Not Finish" (DNF). This changes RRS 63.1 and A5.

15.2 If there is a postponement, the time limit will be extended up to a maximum of one hour. The length of the postponement will determine the length of time for the time limit. (i.e. Postponement is for 30 minutes the new time limit will be 1730, etc.)

16. Retiring from Race

16.1 Any boat retiring from the race must inform the Race Committee Boat or the St. Petersburg Yacht Club Dockmaster as soon as possible. The Race Committee will monitor VHF channel 63 & 16. SPYC Dockmaster monitors channels 16 & 69.

17. Protests

17.1 Boats intending to protest shall do so in accordance with rule 61 and shall inform the finish committee immediately after finishing by sailing to the opposite side of the committee boat from the finish line, identifying themselves by sail number and the sail number of the boat they are protesting. The protesting boat will continue to display a protest flag and not leave the finish area until acknowledged by the race committee.

This changes RRS 61.1(a).

17.2 The boat protesting shall not in any way interfere with the finish of other boats. Reporting of protests by VHF radio will be accepted.

17.3 A written protest must be delivered to the race committee or protest committee within 30 minutes after the finish boat for that class docks at the SPYC.

17.4 Protest forms and Alternative Penalty Forms will be available on or near the unofficial bulletin board beside the Dock Master's office at SPYC.

17.5 No later than 45 minutes after the end of protest time official notices of times and places of hearings will be posted on the bulletin board and will be considered as delivered to all parties concerned. This posting constitutes the notice required by RRS 61.1(b).

17.6 Protests will be heard in the approximate order that they are received. Some hearings may be postponed due to circumstances beyond the control of the race committee.

18 SCORING

18.1 Corrected times for this race will be calculated using the WFPHRF Random Leg Course (RLC) ratings:

18.2 The Low Point System of Appendix A of the racing rules will apply, except that no score will be excluded.

19. COMMUNICATIONS

19.1 The race committee will monitor VHF channel 63 for courtesy communications from/to regatta participants. Nothing said over VHF Channel 63 for courtesy reasons shall be grounds for protests or redress.

19.2 A boat shall neither make radio transmissions while racing nor receive radio communications not available to all boats. This restriction also applies to cell phones. The only exception is SI 19.1

19.3 The race committee will monitor VHF channel 63 and 16 after the start.

20. Prizes

Prizes will be given to the first, second, and third place finishers for each class/division based upon corrected time using the Random Leg Rating (RLC) handicap system of the WFPHRF.

21. Disclaimer of Liability

Competitors participate in this regatta at their own risk. See RRS Rule 4 Decision to Race. The St. Petersburg Yacht Club, organizing authority, the sponsors, the race committee, officers and board of directors of SPYC, and all those involved in these organizations will not accept any Liability/Responsibility for material damage or personal injury or death sustained in conjunction with or prior to, during or after this regatta.



See Diagrams and Chart next two Pages

APPENDIX B - MARKS and COURSES

The Starting Line will be in the vicinity of Marks "D/E".

The Finish line will at the Bayboro Harbor Entrance mark described as: FL (2+1) G6S 16ft 5M "S"

All mark positions and distances are approximate. See latest NOAA and Notice to Mariners for exact locations.

MARKS

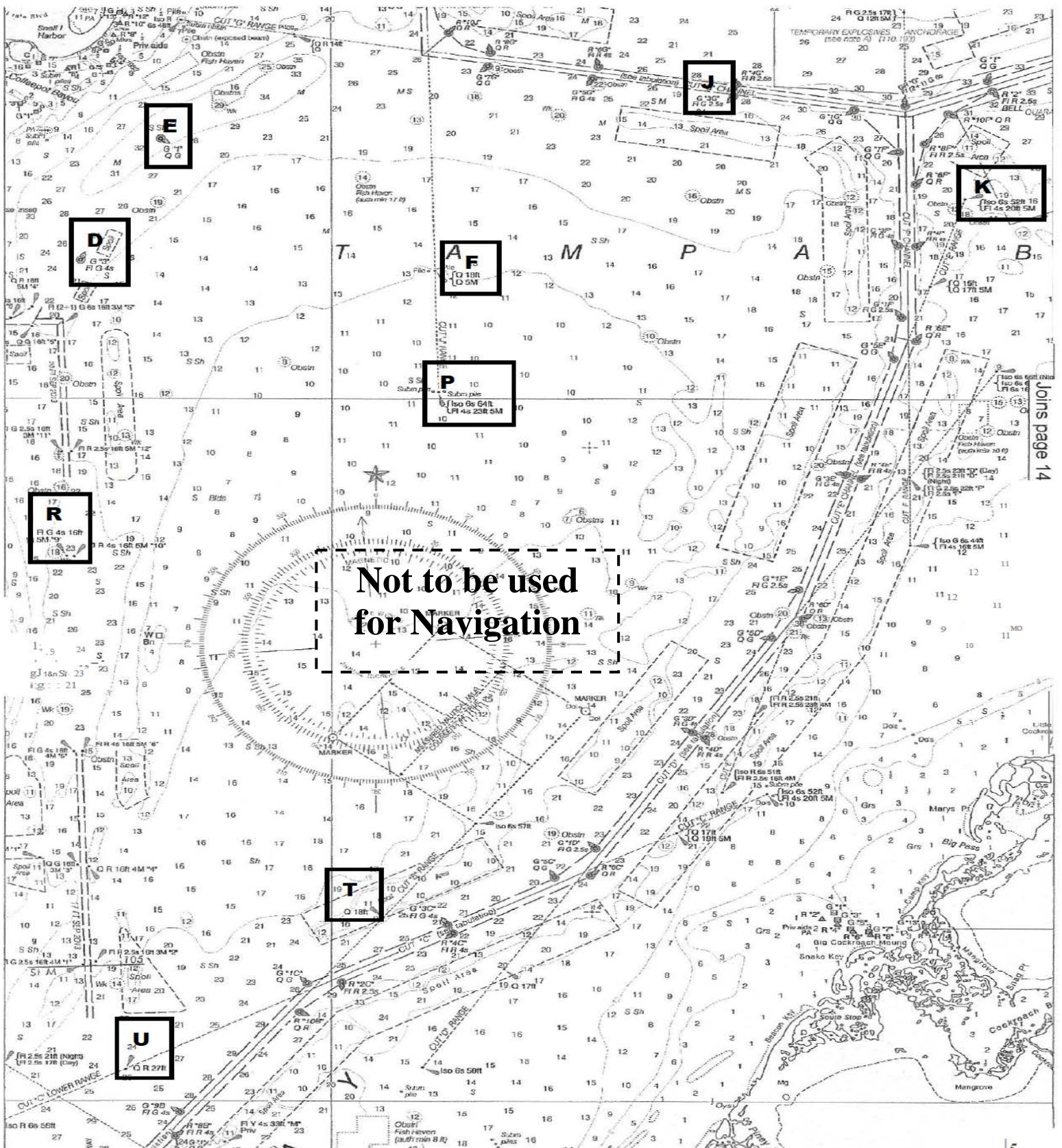
Mark "D"	G "3" Fl G 4s	1nm ESE of SPYC harbor entrance	27 46.0N	82 36.5W
Mark "E"	G "1" QG	1.2nm ENE of SPYC harbor entrance	27 46.8N	82 36.1W
Mark "F"	Q 10 ft Q5M	Front Range Cut J Channel	27 45.9N	82 34.3W
Mark "J"	G "3G" Fl G 2.5s	Cut G Channel	27 47.1N	82 32.5W
Mark "K"	Iso 6s 52ft Fl 4s 20ft 5m	Back Range Cut E Channel	27 46.3N	82 31.0W
Mark "P"	Iso 6s 50ft Fl 4s 5m "A" "B"	Back Range Cut J Channel	27 45.0N	82 34.3W
Mark "R"	Fl G4s 16ft 5M"9"	Pinellas Channel	27 43.9N	82 36.6W
Mark "T"	Q 18 ft	Front Range Cut B Channel	27 41.3N	82 34.7W
Mark "U"	QR 27 ft	Lower Range Cut C Channel	27 40.2N	82 36.3W

<u>COURSE</u>	<u>MARKS TO BE ROUNDED</u>	<u>SIDE TO BE ROUNDED ON</u>	<u>APPROX. DISTANCE</u>
#1	START-J-E-P-FINISH	PORT Except: P round to starboard	10.2NM
#2	START-K-E-P-FINISHES	PORT Except: P round to starboard	12.4NM
#3	START-F-K-E-P-FINISHES	PORT Except: P round to starboard	11.9NM
#4	START-F-K-E-P-K-FINISH	PORT	17.2NM
#5	START-F-K-E-T-P-FINISH	PORT	21.4NM
#6	START-F-J-E-T-FINISH	PORT	15.3NM
#7	START-F-K-T-R-FINISH	STDB	14.5NM
#8	START-F-K-R-FINISH	STDB	10.9NM
#9	START-F-T-FINISH	STDB	11.4NM
#10	START-F-T-U-FINISH	STDB	14.1NM
#11	START-K-T-U-FINISH	STDB	15.9NM
#12	START-F-P-T-U-D-F-FINISH	STDB	18.5NM
#13	START-F-P-T-U-D-F-D-F-FINISH	STDB	21.9NM
#14	START-K-T-U-D-F-FINISH	STDB	22.5NM
#15	START-F-P-T-U-R-P-R-FINISH	STDB	18.8NM
#16	START-K-T-U-R-P-R-FINISH	STDB	23.2NM
#17	START-F-T-U-R-FINISH	STDB	14.1NM

See approximate mark locations on Chart below:

Appendix C

Chart for Pusser's Rum Cup Approximate Location of Marks



Joins page 14

Not to be used
for Navigation